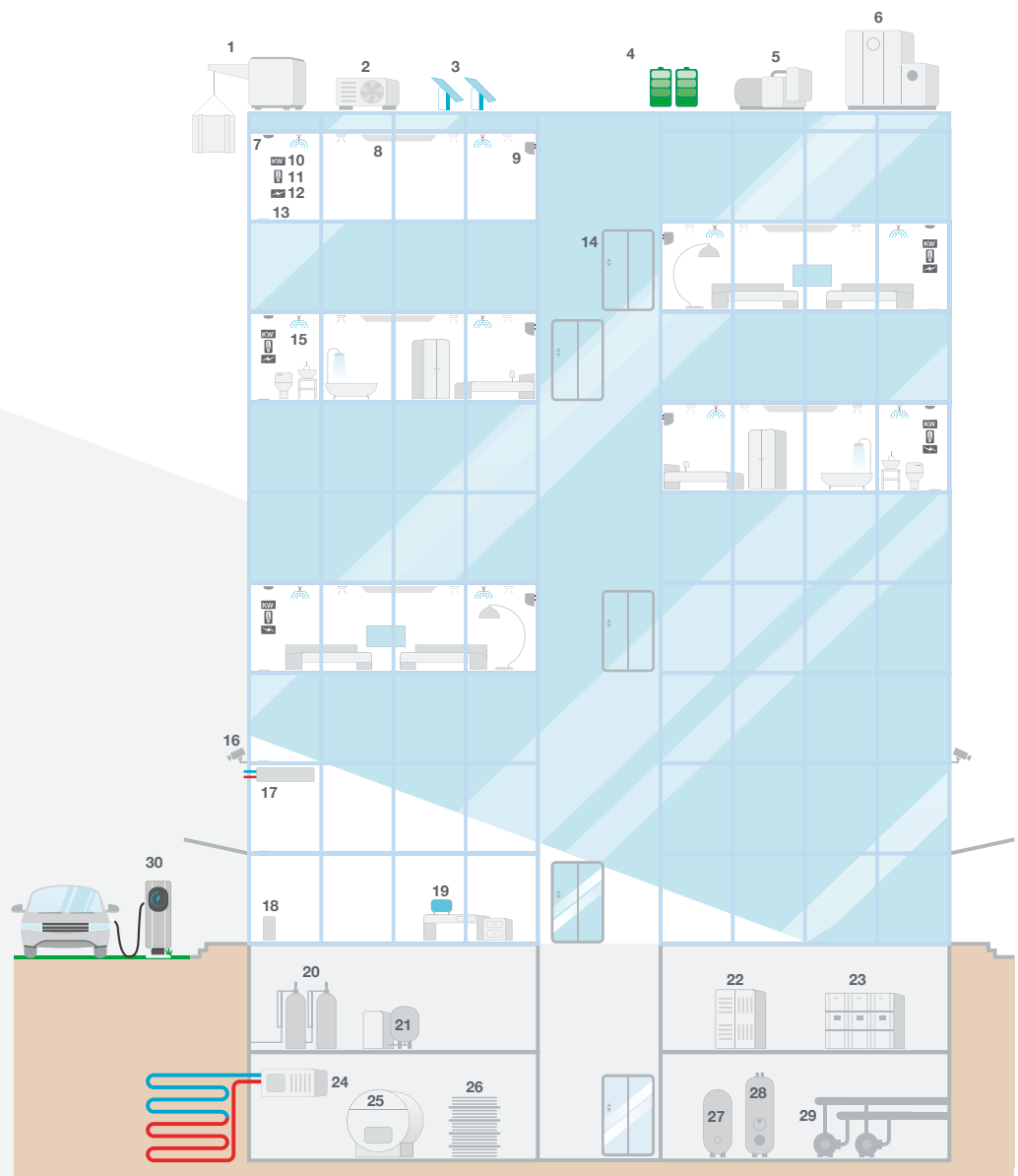


MIDI cover for residential block

- 1 Building maintenance units (BMU)
- 2 Chillers and condensing/air handling units
- 3 Photovoltaic
- 4 Fuel cells
- 5 Generators
- 6 Air handling units
- 7 Fire detection
- 8 Fan coil units
- 9 Variable refrigerant flow (VRF)/variable refrigerant volume (VRV) units
- 10 Energy meters
- 11 Lighting control
- 12 Low voltage distribution
- 13 Trench heaters
- 14 Lifts
- 15 Sprinkler system
- 16 Security systems
- 17 Mechanical ventilation heat recovery (MVHR) units
- 18 Access control
- 19 Building management system
- 20 Filtration systems
- 21 Pressurisation and expansion units
- 22 Main incoming electrical supply, switch gear
- 23 Low voltage switch panel
- 24 Ground source heat pumping system
- 25 Hot water heating boiler
- 26 Plate heat exchangers for secondary systems on low temperature hot water (LTHW) and chilled water (CHW)
- 27 Calorifiers
- 28 Thermal storage vessels
- 29 Circulating pumps
- 30 EV charging point



Note: Any information related to policy cover is provided as a guide and should be read in conjunction with the full policy documents.

Every care was taken to ensure the information in this article was correct at the time of publication (August 2022). Guidance provided does not replace the reader's professional judgement and any construction project should comply with the relevant Building Regulations or applicable technical standards. For the most up to date Premier Guarantee technical guidance please refer to your Risk Management Surveyor and the latest version of the [Premier Guarantee Technical Manual](#).